

RUNFLEX TYRE COUPLINGS are torsionally elastic couplings that can accommodate simultaneous maximum misalignment without imposing load on adjacent bearings. It protects equipment against vibration, impact loads and heavy shocks occurred during sudden load changes. It also has low reaction stiffness in all direction which minimizes stress on bearings even under condition of extreme misalignment

RUNFLEX TYRE COUPLINGS are widely used in Cement plants, Sugar Industries, Food & Beverage Industries, Chemical & Pharmaceutical Industries, Power generation plants and other general industries.

FEATURES :

1. Maximum misalignment carrying capacity.
1. Easy to assemble & dismantle.
2. Torsionally soft.
3. Backlash free.
4. Dampens destructive vibrations.
5. No lubrication required.
6. Elements can be replaced easily.

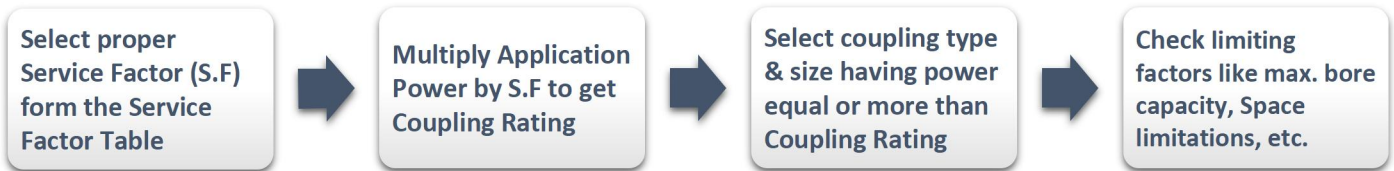


(RT SERIES)



(RT-S SERIES)

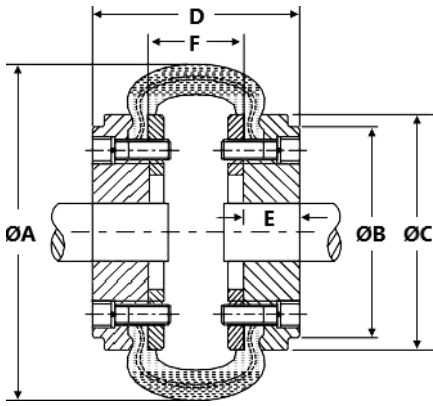
SELECTION PROCEDURE :



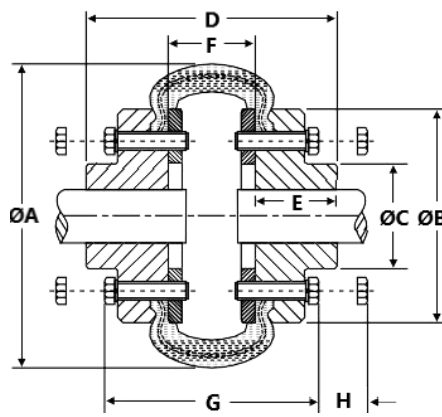
SERVICE FACTOR TABLE :

DRIVEN MACHINE	DRIVER MACHINE					
	ELECTRIC MOTORS STEAM TURBINES			OIL, GAS , STEAM WATER ENGINES		
	HOURS PER DAY			HOURS PER DAY		
	UPTO 10	10 - 16	OVER 16	UPTO 10	10 - 16	OVER 16
For special cases where substantial shock, vibration and torque fluctuations occur, contact us with details.						
CONSTANT TORQUE FLUCTUATIONS Centrifugal pumps, Compressors, Light fans, Alternators, Conveyors, etc.	0.8	0.9	1.0	1.3	1.4	1.5
LIGHT TORQUE FLUCTUATIONS Screw pumps & compressors, Rotary compressors & dryers, Textiles machinery, Draught fans, Paper mill winder, marine propellers, etc.	1.3	1.4	1.5	1.8	1.9	2.0
MEDIUM TORQUE FLUCTUATIONS Reciprocating pumps, Bucket elevators, Crane & winders, Paper mills, Positive displacement pumps, etc.	1.8	1.9	2.0	2.3	2.4	2.5
HIGH TORQUE FLUCTUATIONS Reciprocating conveyors, High velocity mixtures, Rubber machinery, Crusher ball mills, Cooling towers, etc.	2.3	2.4	2.5	2.8	2.9	3.0

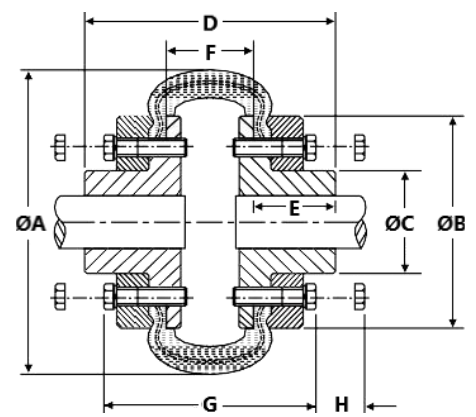
RUNFLEX TYRE COUPLING (RT SERIES)



RT - 40 & RT - 60



RT - 70 TO RT - 120



RT - 140 TO RT - 250

SIZE	RATING kW @ 100 RPM	MAX SPEED (RPM)	BORE (ØD)		ØA	ØB	ØC	D	E	F	G	H	Bolts per Flange	WT in KG	M.I IN Kgm2	MAX MISALIGNMENT	
			P.B	MAX												PARAL LEL	END FLOAT±
RT - 40	0.22	4500	10	30	104	82	82	67	22	23	67	43	4	2	0.0014	1.1	1.3
RT - 45	0.39	4500	10	32	120	94	94	73	25	23	73	43	4	2.2	0.0025	1.2	1.5
RT - 50	0.56	4500	14	38	134	100	73	92	32	28	92	43	4	4	0.0034	1.3	1.7
RT - 60	1.11	4000	15	48	165	125	79	112	38	36	96	43	5	5	0.010	1.6	2.0
RT - 70	1.7	3600	15	55	197	144	82	132	45	42	101	10	5	8	0.018	1.9	2.3
RT - 80	2.65	3100	20	65	211	167	95	149	51	47	106	10	6	12	0.036	2.1	2.6
RT - 85	3.2	3000	20	70	222	179	103	154	53	48	107	13	6	14	0.050	2.2	2.8
RT - 90	3.82	2880	20	75	235	188	110	164	57	50	119	13	6	15	0.063	2.4	3.0
RT - 100	5.29	2600	25	85	254	216	124	178	60	58	123	13	6	21	0.11	2.6	3.3
RT - 110	7.46	2300	30	90	279	233	134	180	65	50	127	14	6	28	0.16	2.9	3.7
RT - 120	12.4	2050	35	100	314	264	152	207	76	55	140	14	6	41	0.34	3.2	4.0
RT - 140	19.7	1800	50	120	359	313	195	204	89	26	152	14	8	61	0.69	3.7	4.6
RT - 160	32.6	1600	60	140	402	345	216	220	102	16	156	19	8	86	1.21	4.2	5.3
RT - 180	57.4	1500	70	150	470	398	266	258	114	30	188	19	10	141	2.01	4.8	6.0
RT - 200	84	1300	80	150	508	429	266	276	114	48	206	19	12	179	4.03	5.3	6.6
RT - 220	104	1100	90	160	562	474	267	312	127	56	236	20	12	312	8.67	5.8	7.3
RT - 250	132	1000	100	190	628	532	290	360	150	60	250	25	12	500	16.85	6.6	8.2

ALL DIMENSIONS ARE IN MM

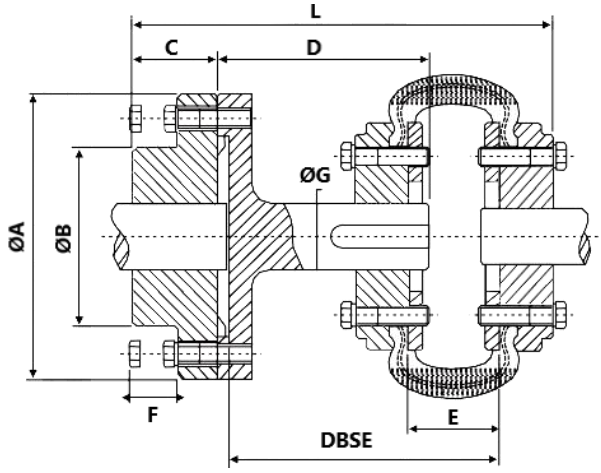
NOTES:

1. ALL DIMENSIONS ARE IN MM.
2. WEIGHTS AND M.I ARE SPECIFIED CONSIDERING P.B.
3. MAX. TORQUE IS 3 TIMES THE NORMAL TORQUE.
4. TOLERANCE ON FINISH BORE & KEYWAY WILL BE H7 & JS9 RESPECTIVELY AS PER BS 4235 : PART 1 : 1972

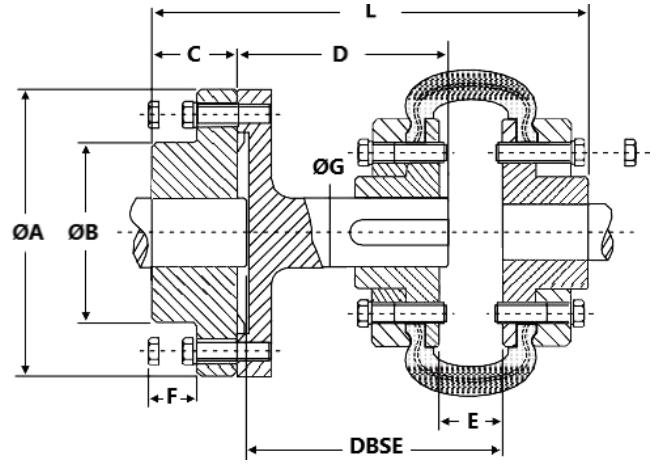
MATERIAL SPECIFICATION	
FLANGE	CAST IRON C.I. (DIN 1693 GG 20)
TYRE	NATURAL RUBBER (ASTM D 2000 810)
CLAMPING RING	MILD STEEL M.S. (B.S. 970)
HEX BOLT	HIGH TENSILE H.T. (ISO 4041 : GR. 8.8)

TYRE COUPLING WITH TAPER BUSH ARRANGEMENT WILL BE AVAILABE ON REQUEST

RUNFLEX SPACER TYRE COUPLING (RT-S SERIES)



RT-40-S TO RT-120-S



RT-140-S

SIZE	SPACER SIZE	DBSE	BORE		ØA	ØB	C	D	E	F	ØG	L				
			P.B.	MAX												
RT-40-S	12	80	10	42	118	83	25	77	23	22	25	134				
		100						97				140				
	16	100	18	48				127	80	38		94	23	24	32	170
		140						134				210				
RT-50-S	16	100	18	48	127	80	38	94	28	24	32	173				
		140						134				213				
RT-60-S	16	100	18	48	127	80	38	94	36	24	32	177				
		140						134				214				
RT-70-S	25	100	38	80	178	127	45	94	42	27	42	180				
		140						134				220				
		180						174				260				
RT-80-S	25	100	38	80	178	127	45	94	47	27	48	193				
		140						134				233				
		180						174				273				
RT-90-S	25	140	38	80	178	127	45	134	50	27	48	235				
		180						174				275				
RT-100-S	30	140	40	90	216	146	76	134	58	33	60	270				
		180						174				310				
RT-110-S	30	140	40	90	216	146	76	134	50	33	60	270				
		180						174				310				
RT-120-S	35	140	66	110	248	178	89	134	26	33	75	298				
		180						174				328				
RT-140-S	35	140	66	110	248	178	89	134	16	33	80	296				
		180						174				336				

ALL DIMENSIONS ARE IN MM

SPACER M.O.C. - STEEL. CUSTOMIZED SPACERS AVAILABLE ON REQUEST.

SPACER TYPE TYRE COUPLINGS WITH TAPER BUSH ARRANGEMENT WILL BE AVAILABE ON REQUEST

TUV INDIA AN ISO 9001:2015 REGISTERED COMPANY



RUNFLEX TRANSMISSIONS PVT. LTD.

3/3 DEDGE INDUSTRIES, NANDED PHATA, SINHAGAD ROAD, PUNE- 411041

✉ : runflex.transmissions@gmail.com ☎ : 9545565527/9422089962

🌐 : www.runflextransmissions.com

OUR PRODUCT RANGE



DISC COUPLINGS



PIN BUSH COUPLINGS



JAW COUPLINGS



GEAR COUPLINGS



TYRE COUPLINGS



ENCODER / BEAM COUPLINGS



UNIVERSAL JOINTS



NYLON GEAR COUPLINGS



PRECUT ALIGNMENT SHIMS



QUICKALINE ALIGNMENT KIT



RUNFLEX TRANSMISSIONS PVT. LTD.

3/3 DEDGE INDUSTRIES, NANDED PHATA, SINHAGAD ROAD, PUNE- 411041

M : runflex.transmissions@gmail.com **☎** : 9545565527 / 9422089962

🌐 : www.runflextransmissions.com

TUV INDIA AN ISO 9001:2015 REGISTERED COMPANY