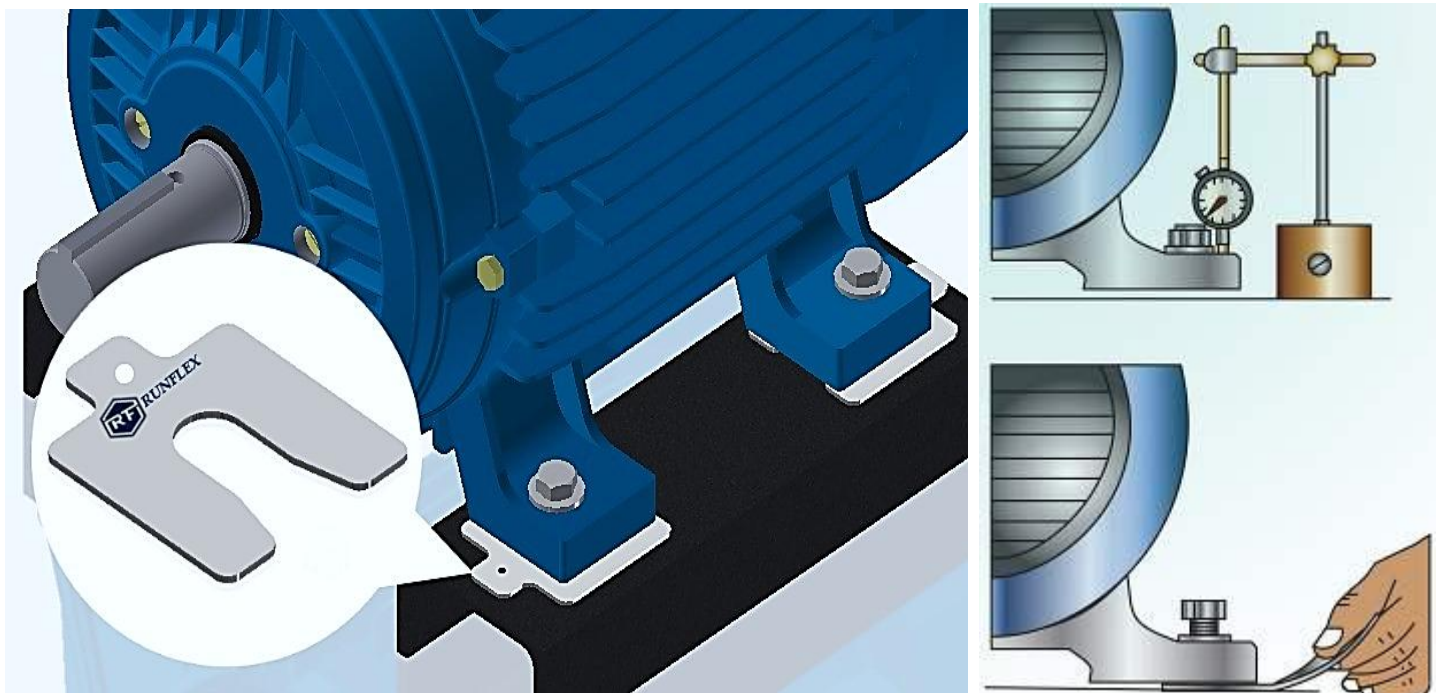


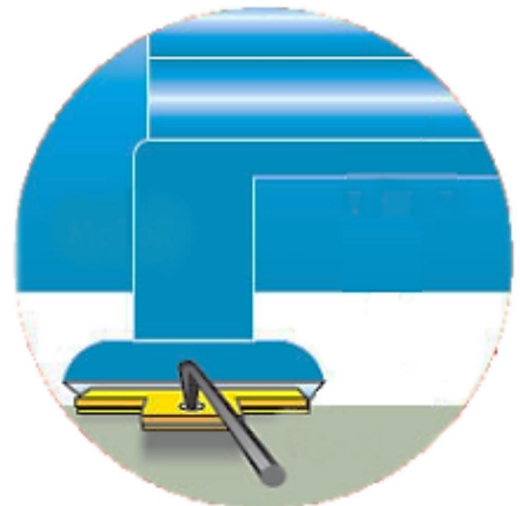
PRECUT ALIGNMENT SHIMS

Alignment shims are used in shaft alignment process to correct the vertical position of a movable machine so that it will be in alignment with the stationary or reference machine. They are designed to make parts fit more accurately, and to keep different components of a machine aligned. This reduces wear, keeps things stable, and allows a machine to function to the very best of its ability.

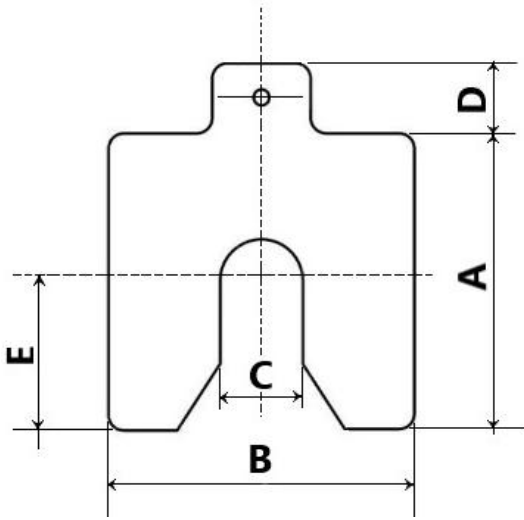


FEATURES:-

- PRECUT & BURR FREE
- ACCURATE & EVEN IN THICKNESS
- SHIM SIZES CONFORM TO STANDARD BOLT SIZES
- EASY & CONVINENT TO CARRY
- PERMANENT MARKING OF SIZE & THICKNESS ON EACH SHIM
- CORROSION RESISTANT
- SAFE TO HANDLE
- M.O.C - STAINLESS STEEL (GRADE 304)



DIMENSIONAL DATA



SIZE	A	B	C	D	E	THICKNESS
RF - 1	40	40	13	16	20	0.05
RF - 2	50	50	17	18	25	0.10
RF - 3	75	75	21	18	37.5	0.20
RF - 4	100	100	27	25	50	0.40
RF - 5	125	125	45	30	62.5	0.50
RF - 6	200	200	55	30	100	0.70
						1.00
						2.00
						3.00

ALL DIMENSIONS ARE INMM

RUNFLEX ALIGNMENT SHIM KIT :

RUNFLEX ALIGNMENT SHIM KITS are designed for use in hardest industrial environments. It consists of shims of each thickness packed in a sturdy wooden case. It helps service engineers on site to have the right shim close to hand, which in turn saves time.

Each kit consists of shims of every thickness as per the table below.

KIT	0.05	0.10	0.20	0.40	0.50	0.70	1.00	2.00
RF-1 TO RF-4	20	20	20	20	20	20	20	10
RF-5 & RF-6	10	10	10	10	10	10	10	10



TUV INDIA AN ISO 9001:2015 REGISTERED COMPANY



RUNFLEX TRANSMISSIONS PVT. LTD.

3/3 DEDGE INDUSTRIES, NANDED PHATA, SINHAGAD ROAD, PUNE- 411041

M : runflex.transmissions@gmail.com **☎** : 9545565527 / 9422089962

G : www.runflextransmissions.com